



SAFETY-RELIEF VALVE

MODEL 1600

(SERIES 1621,1623,1624 & 1625)

*ASME

UV CODED

NATIONAL BOARDED

* ASME UV CODED PER SEC. VIII DIV. I
AIR & GAS SERVICE.(PLASTIC SEAT ONLY)

AIR SERVICE MUST HAVE LIFT LEVER
SEE PAGE 60 FOR LIFTING DEVICES

R.F. FLANGE DIMENSIONS

| *ORIFICE SIZE | INLET | OUTLET | A ±1/8 | B ±1/8 | C ±1/16 |
|---------------|---------|-----------------------|---------|--------|---------|
| .250, * | 1-150 | 2-150 OR 2½-150 | 11-1/16 | 4-7/8 | 6 |
| | 1-300 | | 11-1/16 | 4-7/8 | 6 |
| | 1-600 | | 11-1/16 | 4-7/8 | 6 |
| .375, * | 1½-150 | 2½-150 | 11-1/16 | 4-7/8 | 6 |
| | 1½-300 | | 11-1/16 | 4-7/8 | 6 |
| .500, * | 1½-600 | 2-300 OR 2½-300 | 11-1/16 | 4-7/8 | 6 |
| | 1½-900 | | 11-1/16 | 4-7/8 | 6 |
| & | 1½-1500 | 2½-300 | 11-1/16 | 4-7/8 | 6 |
| | 1½-2500 | | 11-3/4 | 5-1/2 | 6 |
| .625 * | 2-150 | 2-150 OR 2½-150 | 11-1/16 | 4-7/8 | 6 |
| | 2-300 | | 11-1/16 | 4-7/8 | 6 |
| | 2-600 | | 11-1/16 | 4-7/8 | 6 |

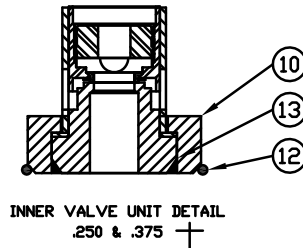
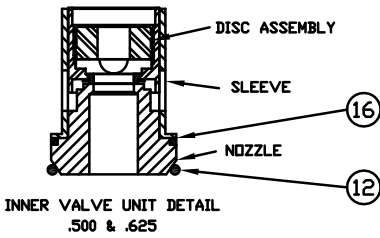
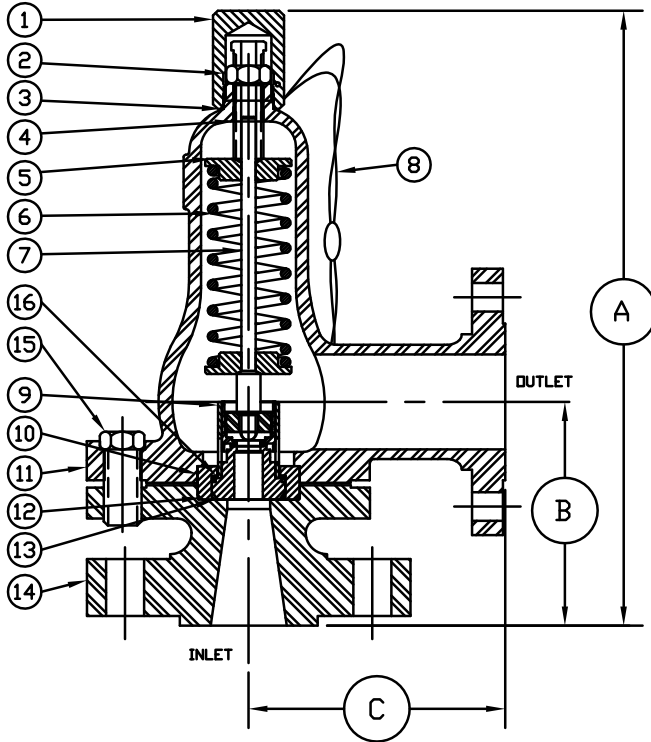
FOR R.T.J. DIMENSIONS, CONSULT FACTORY
SEE PAGE 23 & 24 FOR CAPACITY CHART

| SERIES NO. § | ORIFICE SIZE | SEAT MATERIAL | SET PRESSURE RANGE |
|--------------|--------------|---------------|--------------------|
| *1621 | .250 | PLASTIC ONLY | 40 - 6,000 |
| *1623 | .375 | PLASTIC ONLY | 40 - 8,000 |
| *1624 | .500 | PLASTIC ONLY | 40 - 2,600 |
| *1625 | .625 | PLASTIC ONLY | 40 - 1,450 |

§ SEE PAGE 89 & 90 FOR PART NUMBERING SYSTEM.

SUGGESTED SEAT MATERIAL

| SET PRESSURE | SEAT MATERIAL |
|---------------|---------------|
| 40 - 3,000 | TEFLON † |
| 3,000 - 5,000 | KEL-F † |
| 5,000 - 6,000 | VESPEL † |



† TEMPERATURE RANGE
TEFLON : -450°F TO 500°F
KEL-F : -400°F TO 400°F
VESPEL : -420°F TO 500°F

† OTHER SPRING MATERIALS
AVAILABLE UPON REQUEST.

WEIGHT IS APPROX. 35#
DEPENDING ON FLANGE SIZE

***.250 & .375 ORIFICE HAS
303 S/S SLEEVE,
316 S/S NOZZLE

| ITEM NO. | PART NAME | 316 S/S MATERIAL CLASS | CARBON STEEL MATERIAL CLASS |
|----------|---------------------|------------------------|-----------------------------|
| 1 | HOOD | ASTM A479,TYPE 316 | ASME SA29,TYPE 12L14 |
| 2 | LOCKNUT | ASTM A479,TYPE 316 | ASME SA29,TYPE 12L14 |
| 3 | HOOD SEAL | TEFLON,BUNA-N,VITON | TEFLON,BUNA-N,VITON |
| 4 | PRESSURE SCREW | ASTM A479,TYPE 316 | ASME SA29,TYPE 12L14 |
| 5 | SPRING PLATES | ASTM A479,TYPE 316 | ASTM A582,TYPE 303 |
| 6 | SPRING | ASTM A313,TYPE 17/7 | ASTM A313,TYPE 17/7 |
| 7 | SPRING POST | ASTM A479,TYPE 316 | ASTM A582,TYPE 303 |
| 8 | SEAL & WIRE | LEAD SEAL;S/S WIRE | LEAD SEAL;S/S WIRE |
| 9 | INNER VALVE UNIT*** | 303 S/S ; 316 S/S | 303 S/S ; 316 S/S |
| 10 | RETAINER RING | ASTM A479,TYPE 316 | ASTM A582,TYPE 303 |
| 11 | BONNET | ASME A351,TYPE CF8M | ASME SA216,TYPE WCB |
| 12 | BODY SEAL | TEFLON,BUNA-N,VITON | TEFLON,BUNA-N,VITON |
| 13 | RETAINER SEAL | TEFLON,BUNA-N,VITON | TEFLON,BUNA-N,VITON |
| 14 | BODY | ASME A351,TYPE CF8M | ASME SA216,TYPE WCB |
| 15 | BOLTS (3 REQUIRED) | ASTM A479,TYPE 316 | B7 |
| 16 | B.P. SEAL | TEFLON,BUNA-N,VITON | TEFLON,BUNA-N,VITON |