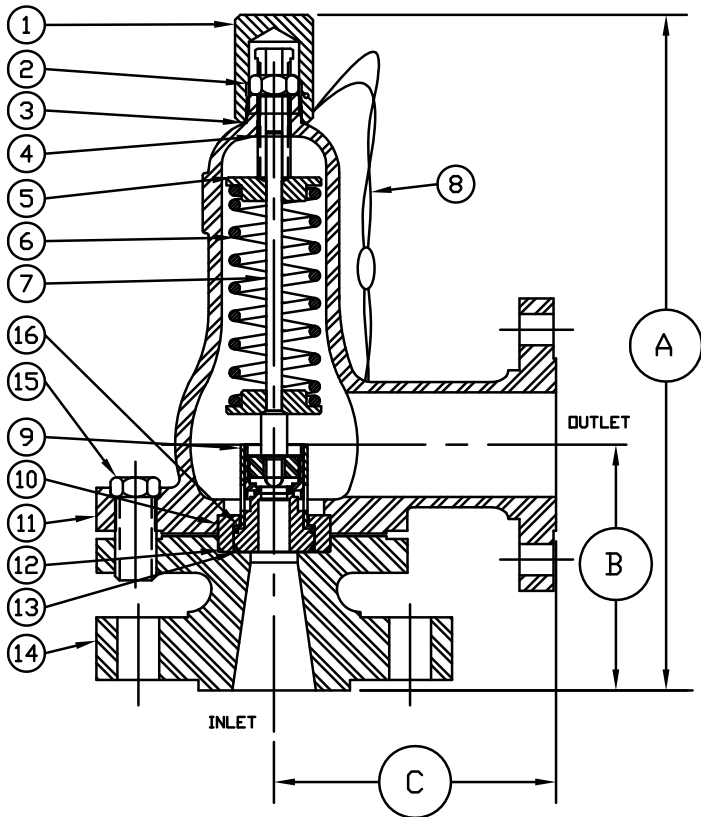




# SAFETY-RELIEF VALVE

MODEL 1600  
(SERIES 1646, 1647 & 1648)

FOR AIR & GAS SERVICE,  
AT 10% OVERPRESSURE  
METAL SEATS ONLY



R.F. FLANGE DIMENSIONS

ORIFICE SIZE	INLET	OUTLET	A ±1/8	B ±1/8	C ±1/16
.800, 1,000, & 1,281	3-150	4-150	19-3/8	7-1/4	7-1/8
	3-300		19-3/8	7-1/4	7-1/8
	3-600		19-3/8	7-1/4	7-1/8
	3-900		19-3/8	7-1/4	7-1/8
	4-150		19-3/8	7-1/4	7-1/8

FOR R.T.J. DIMENSIONS, CONSULT FACTORY

§ SEE PAGE 16 & 17 FOR PART NUMBERING SYSTEM.

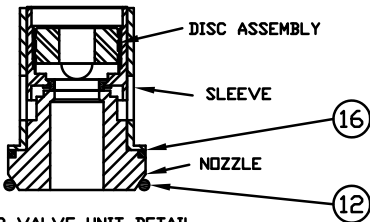
SERIES NO. §	ORIFICE SIZE	SEAT MATERIAL	SET PRESSURE RANGE
1646	.800	METAL ONLY	40 - 1,000
1647	1,000	METAL ONLY	40 - 1,000
1648	1,281	METAL ONLY	40 - 1,000

¶ TEMPERATURE RANGE  
TEFLON : -450°F TO 500°F  
KEL-F : -400°F TO 400°F

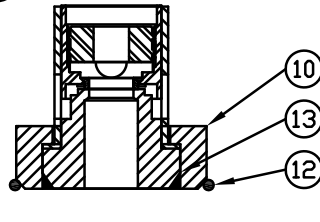
‡ OTHER SPRING MATERIALS  
AVAILABLE UPON REQUEST.

† USE RETAINER RING FOR  
THESE INNER VALVE UNITS  
ONLY.

WEIGHT IS APPROX. 95#  
DEPENDING ON FANGE SIZE



INNER VALVE UNIT DETAIL  
1,281 & 1,750



INNER VALVE UNIT DETAIL  
.800 & 1,000

ITEM NO.	PART NAME	316 S/S MATERIAL CLASS	CARBON STEEL MATERIAL CLASS
1	HOOD	ASTM A479,TYPE 316	ASME SA29,TYPE 12L14
2	LOCKNUT	ASTM A479,TYPE 316	ASME SA29,TYPE 12L14
3	HOOD SEAL	TEFLON,BUNA-N,VITON	TEFLON,BUNA-N,VITON
4	PRESSURE SCREW	ASTM A479,TYPE 316	ASME SA29,TYPE 12L14
5	SPRING PLATES	ASTM A479,TYPE 316	ASTM A582,TYPE 303
6	SPRING	ASTM A313,TYPE 17/7	ASTM A313,TYPE 17/7
7	SPRING POST	ASTM A479,TYPE 316	ASTM A582,TYPE 303
8	SEAL & WIRE	LEAD SEAL:S/S WIRE	LEAD SEAL:S/S WIRE
9	INNER VALVE UNIT	303 S/S ; 316 S/S	303 S/S ; 316 S/S
10	RETAINER RING	ASTM A479,TYPE 316	ASTM A582,TYPE 303
11	BONNET	ASME A351,TYPE CF8M	ASME SA216,TYPE WCB
12	BODY SEAL	TEFLON,BUNA-N,VITON	TEFLON,BUNA-N,VITON
13	RETAINER SEAL	TEFLON,BUNA-N,VITON	TEFLON,BUNA-N,VITON
14	BODY	ASME A351,TYPE CF8M	ASME SA216,TYPE WCB
15	BOLTS (3 REQUIRED)	ASTM A479,TYPE 316	B7
16	B.P. SEAL	TEFLON,BUNA-N,VITON	TEFLON,BUNA-N,VITON