

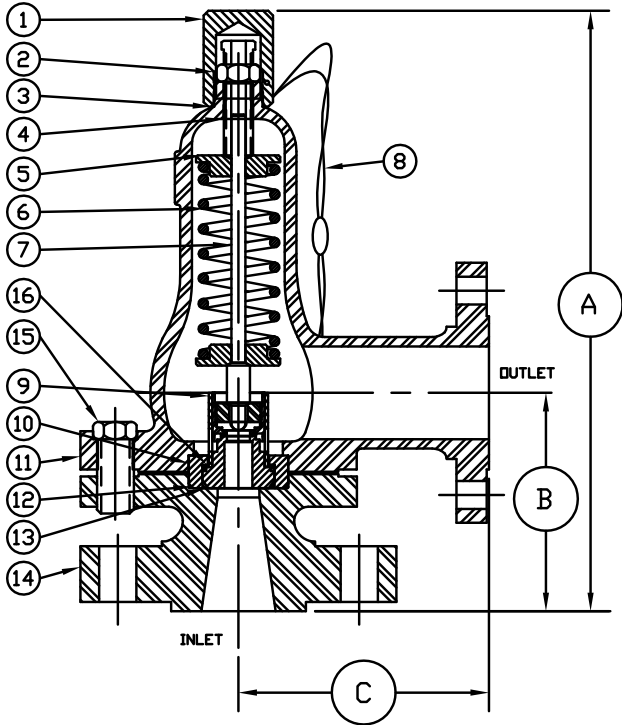


SAFETY-RELIEF VALVE

MODEL 1600

(SERIES 1634 & 1636)

FOR LIQUID SERVICE
AT 10% OVERPRESSURE



R.F. FLANGE DIMENSIONS

| ORIFICE SIZE | INLET | OUTLET | A ±1/8 | B ±1/8 | C ±1/16 |
|--------------|---------|-------------|---------|---------|---------|
| .500 | 1½-150 | 2½-150, | 16-5/8 | 6-1/8 | 6-3/4 |
| | 1½-300 | | 16-5/8 | 6-1/8 | 6-3/4 |
| | 1½-600 | | 16-5/8 | 6-1/8 | 6-3/4 |
| | 1½-900 | 2½-300, | 16-5/8 | 6-1/8 | 6-3/4 |
| | 1½-1500 | 16-5/8 | 6-1/8 | 6-3/4 | |
| .800 | 2-150 | 3-150, | 16-5/8 | 6-1/8 | 6-3/4 |
| | 2-300 | | 16-5/8 | 6-1/8 | 6-3/4 |
| | 2-600 | OR 3-300 | 16-5/8 | 6-1/8 | 6-3/4 |
| | 2-900 | | 16-5/8 | 6-1/8 | 6-3/4 |
| | 2-1500 | | 16-5/8 | 6-1/8 | 6-3/4 |
| | 2-2500 | | 17-3/16 | 6-11/16 | 6-3/4 |
| | 3-150 | | 16-5/8 | 6-1/8 | 6-3/4 |
| | | | | | |

FOR R.T.J. DIMENSIONS, CONSULT FACTORY

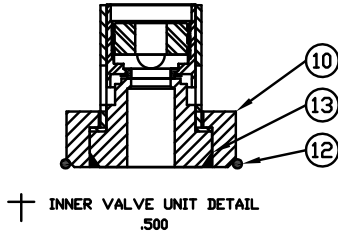
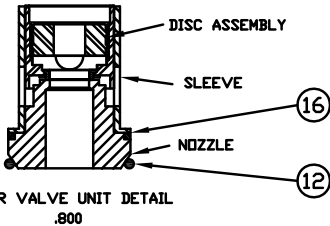
SEE PAGE 89 & 90 FOR PART NUMBERING SYSTEM.

| SERIES NO. S | ORIFICE SIZE | SEAT MATERIAL | SET PRESSURE RANGE |
|--------------|--------------|---------------|--------------------|
| 1634 | .500 | PLASTIC ONLY | 40 - 3,500 |
| 1636 | .800 | PLASTIC ONLY | 40 - 3,500 |

SEE PAGE 72 FOR CAPACITY CHART

SUGGESTED SEAT MATERIAL

| SET PRESSURE | SEAT MATERIAL |
|---------------|---------------|
| 40 - 3,000 | TEFLON 1 |
| 3,000 - 5,000 | KEL-F 1 |



1 TEMPERATURE RANGE
TEFLON : -450°F TO 500°F
KEL-F : -400°F TO 400°F

OTHER SPRING MATERIALS
AVAILABLE UPON REQUEST.

WEIGHT IS APPROX. 60#
DEPENDING ON FLANGE SIZE

USE RETAINER RING FOR
THESE INNER VALVE UNITS
ONLY.

| ITEM NO. | PART NAME | 316 S/S MATERIAL CLASS | CARBON STEEL MATERIAL CLASS |
|----------|--------------------|------------------------|-----------------------------|
| 1 | HOOD | ASTM A479,TYPE 316 | ASME SA29,TYPE 12L14 |
| 2 | LOCKNUT | ASTM A479,TYPE 316 | ASME SA29,TYPE 12L14 |
| 3 | HOOD SEAL | TEFLON,BUNA-N,VITON | TEFLON,BUNA-N,VITON |
| 4 | PRESSURE SCREW | ASTM A479,TYPE 316 | ASME SA29,TYPE 12L14 |
| 5 | SPRING PLATES | ASTM A479,TYPE 316 | ASTM A582,TYPE 303 |
| 6 | SPRING | ASTM A313,TYPE 17/7 | ASTM A313,TYPE 17/7 |
| 7 | SPRING POST | ASTM A479,TYPE 316 | ASTM A582,TYPE 303 |
| 8 | SEAL & WIRE | LEAD SEAL:S/S WIRE | LEAD SEAL:S/S WIRE |
| 9 | INNER VALVE UNIT | 303 S/S ; 316 S/S | 303 S/S ; 316 S/S |
| 10 | RETAINER RING | ASTM A479,TYPE 316 | ASTM A582,TYPE 303 |
| 11 | BONNET | ASME A351,TYPE CF8M | ASME SA216,TYPE WCB |
| 12 | BODY SEAL | TEFLON,BUNA-N,VITON | TEFLON,BUNA-N,VITON |
| 13 | RETAINER SEAL | TEFLON,BUNA-N,VITON | TEFLON,BUNA-N,VITON |
| 14 | BODY | ASME A351,TYPE CF8M | ASME SA216,TYPE WCB |
| 15 | BOLTS (3 REQUIRED) | ASTM A479,TYPE 316 | B7 |
| 16 | B.P. SEAL | TEFLON,BUNA-N,VITON | TEFLON,BUNA-N,VITON |