

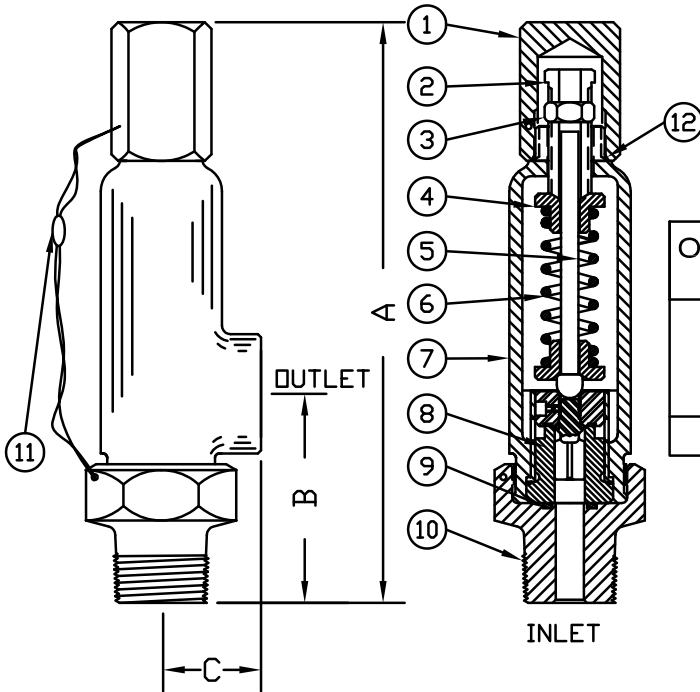


SAFETY-RELIEF VALVE

MODEL 4900

(SERIES 494 & 496)

FOR LIQUID SERVICE
AT 10% OVERPRESSURE



THREAD CONNECTIONS

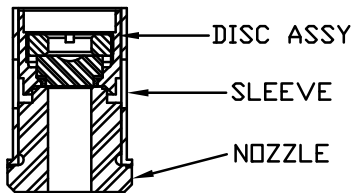
ORIFICE SIZE	INLET	OUTLET
.375	1/2,3/4,1,1 1/4,1 1/2,2 MNPT	1/2,3/4,1",2" FNPT
	1/2,3/4,1 FNPT	
	MS33649-12,16	MS33649-16
.500	1 1/4,1 1/2,2 MNPT	2 FNPT

SERIES NO. §	ORIFICE SIZE	SEAT MATERIAL	SET PRESSURE RANGE
494	.375	PLASTIC ONLY	50 - 3,500
496	.500	PLASTIC ONLY	50 - 3,500

SUGGESTED SEAT MATERIAL

SET PRESSURE	SEAT MATERIAL
50 - 3,000	TEFLON †
3,000 - 3,500	KEL-F †

† TEMPERATURE RANGE: TEFLON : -450°F TO 500°F
KEL-F : -400°F TO 400°F



INNER VALVE UNIT DETAIL
PLASTIC SEAT

DIMENSIONS	A±1/8	B±1/8	C±1/16	APPROX WEIGHT
1 1/4,1 1/2,2" MNPT x 2" FNPT	9"	3-7/8	2-1/8	7#
ALL OTHERS	8-3/8	3"	1-7/16	4-1/2#

SEE PAGE 72 FOR CAPACITY CHARTS
† OTHER SPRING MATERIALS UPON REQUEST
§ SEE PAGE 91 & 92 FOR PART NUMBERING SYSTEM
BACK PRESSURE SEALS AVAILABLE UPON REQUEST

ITEM NO.	PART NAME	316 S/S MATERIAL CLASS	BRONZE MATERIAL CLASS	CARBON STEEL MATERIAL CLASS
1	HOOD	ASTM A479,TYPE 316	ASTM B16	ASME SA29,TYPE 12L14
2	PRESSURE SCREW	ASTM A479,TYPE 316	ASME A582,TYPE 303	ASME SA29,TYPE 12L14
3	LOCKNUT	ASTM A479,TYPE 316	ASME A582,TYPE 303	ASME SA29,TYPE 12L14
4	SPRING PLATES (2)	ASTM A479,TYPE 316	ASME A582,TYPE 303	ASME A582,TYPE 303
5	SPRING POST	ASTM A479,TYPE 316	ASME A582,TYPE 303	ASME A582,TYPE 303
6	SPRING †	ASTM A313,TYPE 316	ASTM A313,TYPE 316	ASTM A313,TYPE 316
7	BONNET	ASME A351,TYPE CF8M	ASTM B584,ALLOY 875	ASTM A395
8	INNER VALVE UNIT	ASTM A479,TYPE 316	ASME A582,TYPE 303	ASME A582,TYPE 303
9	NOZZLE SEAL	TEFLON,BUNA-N,METAL	TEFLON,BUNA-N,METAL	TEFLON,BUNA-N,METAL
10	BODY	ASTM A479,TYPE 316	ASTM B16	ASME SA29,TYPE 1018
11	SEAL & WIRE	LEAD SEAL:S/S WIRE	LEAD SEAL:COPPER WIRE	LEAD SEAL:COPPER WIRE
12	HOOD SEAL	TEFLON,BUNA-N,VITON	TEFLON,BUNA-N,VITON	TEFLON,BUNA-N,VITON