

# SAFETY-RELIEF VALVE MODEL 1500

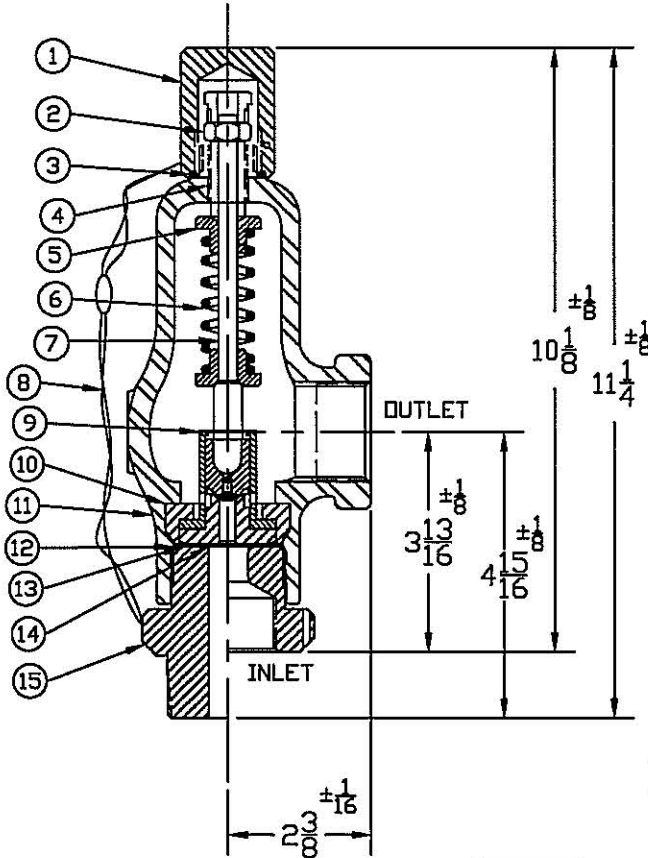
(SERIES 1521,1523,1524,1525 & 1529)

**\*ASME  
UV CODED  
NATIONAL BOARDED**

\*ASME UV CODED PER SEC. VIII DIV. I  
AIR & GAS SERVICE.(PLASTIC SEATS ONLY)

AIR SERVICE MUST HAVE LIFT LEVER  
SEE PAGE 60 FOR LIFTING DEVICES

### THREAD CONNECTIONS



*ORIFICE SIZE	INLET	OUTLET
.187 & .250*	1/2, 3/4, 1, 1 1/4, 1 1/2 MNPT	3/4, 1, 1 1/4, 1 1/2 FNPT
	1/2, 3/4, 1, 1 1/4, 1 1/2 FNPT	MS33649-12,16,20,24
	MS33649-8,10,12,16,20,24	GRAYLOC
	MS33656-8,10,12,16,24	
	9/16,3/4,1' AUTOCLAVE	
.375*	3/4, 1, 1 1/4, 1 1/2 MNPT	1, 1 1/4, 1 1/2 FNPT
	3/4, 1, 1 1/4, 1 1/2 FNPT	MS33649-16,20,24
	MS33649-12,16,20,24	GRAYLOC
	MS33656-12,16,24	
	3/4,1' AUTOCLAVE	
.500* & .625*	1, 1 1/4, 1 1/2 MNPT	1 1/2 FNPT
	1, 1 1/4, 1 1/2 FNPT	MS33649-24
	MS33649-16,20,24	GRAYLOC
	MS33656-16,24	
	1' AUTOCLAVE	

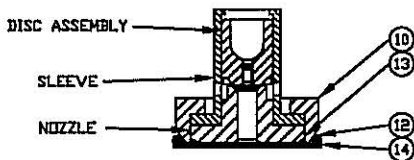
SEE PAGE 23 & 24 FOR CAPACITY CHART

SERIES NO. §	ORIFICE SIZE	SEAT MATERIAL	SET PRESSURE RANGE
*1521	.250	PLASTIC ONLY	40 - *14,000/15,500
*1523	.375	PLASTIC ONLY	40 - *6,000/8,000
*1524	.500	PLASTIC ONLY	40 - 2,750
*1525	.625	PLASTIC ONLY	40 - 1,500
1529	.187	PLASTIC ONLY	14,000 - 33,000

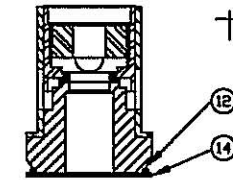
§ SEE PAGE 89 & 90 FOR PART NUMBERING SYSTEM.

### SUGGESTED SEAT MATERIAL

SET PRESSURE	SEAT MATERIAL
40 - 3,000	TEFLON †
3,000 - 5,000	KEL-F †
5,000 - 33,000	VESPEL †



INNER VALVE UNIT WITH RETAINER RING (.25, .187, .250, & .375)



INNER VALVE UNIT (.500 & .625)

† TEMPERATURE RANGE  
TEFLON : -450°F TO 500°F  
KEL-F : -400°F TO 400°F  
VESPEL : -420°F TO 500°F

‡ OTHER SPRING MATERIALS AVAILABLE UPON REQUEST.

WEIGHT IS APPROX. 12#

† USE RETAINER & RETAINER SEAL FOR THESE INNER VALVE UNITS ONLY.

\*\*\*IVU FOR .250 & .375 C/S OR 316 S/S CLASS HAS 303 S/S SLEEVE 316 S/S NOZZLE

ITEM NO.	PART NAME	316 S/S MATERIAL CLASS	CARBON STEEL MATERIAL CLASS
1	HOOD	ASTM A479,TYPE 316	ASME SA29,TYPE 12L14
2	LOCKNUT	ASTM A479,TYPE 316	ASTM A582,TYPE 303
3	HOOD SEAL	TEFLON,BUNA-N,VITON	TEFLON,BUNA-N,VITON
4	PRESSURE SCREW	ASTM A479,TYPE 316	ASTM A582,TYPE 303
5	SPRING PLATES	ASTM A479,TYPE 316	ASTM A582,TYPE 303
6	SPRING	ASTM A313,TYPE 17/77	ASTM A313,TYPE 17/77
7	SPRING POST	ASTM A479,TYPE 316	ASTM A582,TYPE 303
8	SEAL & WIRE	LEAD SEAL,S/S WIRE	LEAD SEAL,S/S WIRE
9	INNER VALVE UNIT***	ASTM A479,TYPE 316	ASTM A479,TYPE 316
10	RETAINER	ASTM A479,TYPE 316	ASTM A582,TYPE 303
11	BONNET	ASME SA351,TYPE CF8M	ASME SA216,TYPE WCB
12	BODY SEAL	TEFLON,BUNA-N,VITON	TEFLON,BUNA-N,VITON
13	RETAINER SEAL	TEFLON,BUNA-N,VITON	TEFLON,BUNA-N,VITON
14	GASKET	TEFLON	TEFLON
15	BODY	ASTM A479,TYPE 316	ASME SA29,TYPE 1018