

SAFETY-RELIEF VALVE

MODEL 1500

(SERIES 1546, 1547 & 1548)

*ASME
UV CODED

NATIONAL BOARDED

*ASME UV CODED PER SEC. VIII DIV. I
AIR & GAS SERVICE. (PLASTIC SEATS ONLY)

AIR SERVICE MUST HAVE LIFT LEVER
SEE PAGE 60 FOR LIFTING DEVICES

THREAD CONNECTIONS

*ORIFICE SIZE	INLET	OUTLET
.800, *	2, 2½, 3" FNPT	2½, 3" FNPT
1.000 *	2, 2½, 3" MNPT	
& 1.281 *	MS33656-24,32	

SEE PAGE 23 & 24 FOR CAPACITY CHART

§ SEE PAGE 89 & 90 FOR PART NUMBERING SYSTEM.

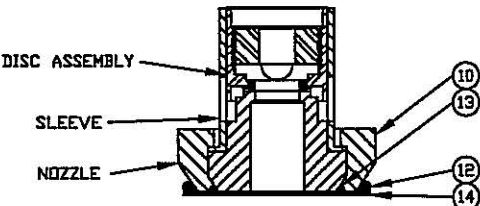
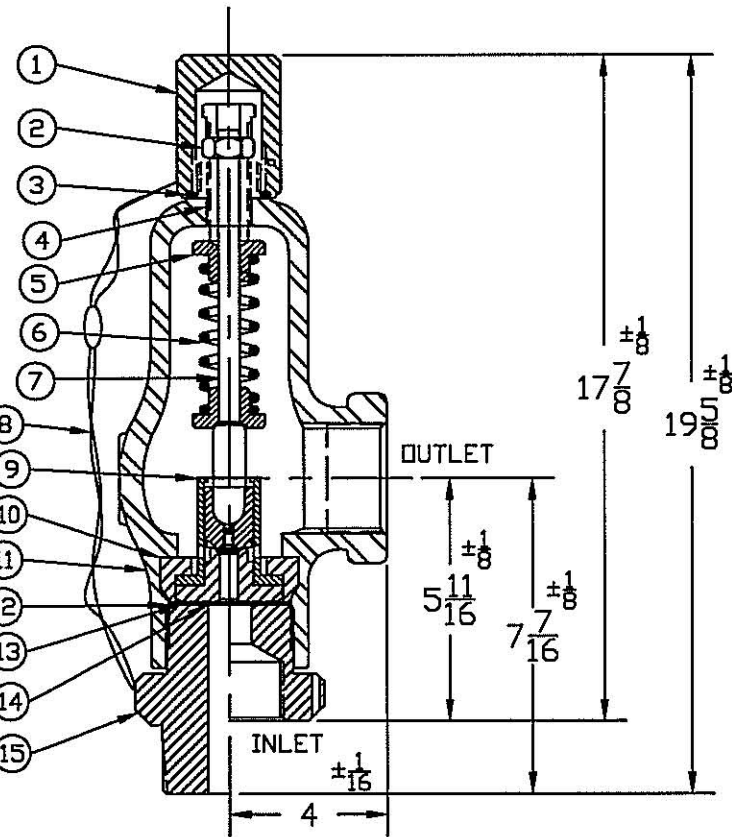
SERIES NO. §	ORIFICE SIZE	SEAT MATERIAL	SET PRESSURE RANGE
*1546	.800	PLASTIC ONLY	40 - 3,800
*1547	1.000	PLASTIC ONLY	40 - 3,000
*1548	1.281	PLASTIC ONLY	40 - 1,100

SUGGESTED SEAT MATERIAL

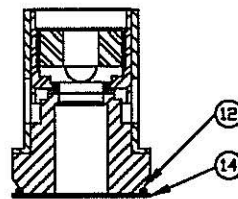
SET PRESSURE	SEAT MATERIAL
40 - 3,000	TEFLON †
3,000 - 3,800	KEL-F †

‡ OTHER SPRING MATERIALS
AVAILABLE UPON REQUEST.

† USE RETAINER & RETAINER
SEAL FOR THESE INNER
VALVE UNITS ONLY.



INNER VALVE UNIT
WITH RETAINER RING
(.800 & 1.000)



INNER VALVE UNIT
(1.281)

† TEMPERATURE RANGE
TEFLON : -450°F TO 500°F
KEL-F : -400°F TO 400°F

WEIGHT IS APPROX. 45#

ITEM NO.	PART NAME	316 S/S MATERIAL CLASS	CARBON STEEL MATERIAL CLASS
1	HOOD	ASTM A479,TYPE 316	ASME SA29,TYPE 12L14
2	LOCKNUT	ASTM A479,TYPE 316	ASTM A582,TYPE 303
3	HOOD SEAL	TEFLON,BUNA-N,VITON	TEFLON,BUNA-N,VITON
4	PRESSURE SCREW	ASTM A479,TYPE 316	ASTM A582,TYPE 303
5	SPRING PLATES	ASTM A479,TYPE 316	ASTM A582,TYPE 303
‡ 6	SPRING	ASTM A313,TYPE 17/7	ASTM A313,TYPE 17/7
7	SPRING POST	ASTM A479,TYPE 316	ASTM A582,TYPE 303
8	SEAL & WIRE	LEAD SEAL,S/S WIRE	LEAD SEAL,S/S WIRE
9	INNER VALVE UNIT	ASTM A479,TYPE 316	ASTM A479,TYPE 316
† 10	RETAINER	ASTM A479,TYPE 316	ASTM A582,TYPE 303
11	BONNET	ASME SA351,TYPE CF8M	ASME SA216,TYPE WCB
‡ 12	BODY SEAL	TEFLON,BUNA-N,VITON	TEFLON,BUNA-N,VITON
‡ 13	RETAINER SEAL	TEFLON,BUNA-N,VITON	TEFLON,BUNA-N,VITON
14	GASKET	TEFLON	TEFLON
15	BODY	ASTM A479,TYPE 316	ASME SA29,TYPE 1018