



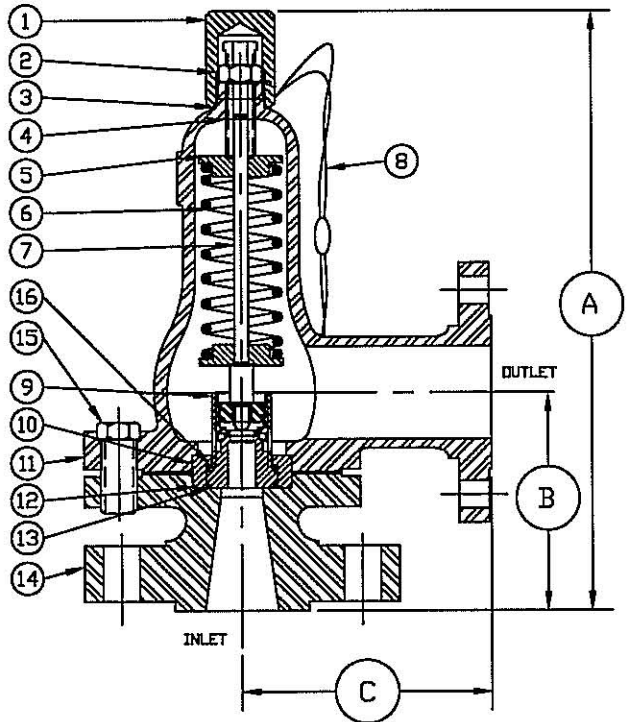
SAFETY-RELIEF VALVE MODEL 1600

(SERIES 1634,1635,1636 & 1637)

***ASME
UV CODED
NATIONAL BOARDED**

*ASME UV CODED PER SEC. VIII DIV. I
AIR & GAS SERVICE.(PLASTIC SEAT ONLY)

AIR SERVICE MUST HAVE LIFT LEVER
SEE PAGE 60 FOR LIFTING DEVICES



R.F. FLANGE DIMENSIONS

*ORIFICE SIZE	INLET	OUTLET	A ±1/8	B ±1/8	C ±1/8
.500,*	1½-150	2½-150,	16-5/8	6-1/8	6-3/4
	1½-300		16-5/8	6-1/8	6-3/4
	1½-600		16-5/8	6-1/8	6-3/4
.625,*	1½-900	2½-300,	16-5/8	6-1/8	6-3/4
	1½-1500		16-5/8	6-1/8	6-3/4
.800,*	2-150	3-150,	16-5/8	6-1/8	6-3/4
	2-300		16-5/8	6-1/8	6-3/4
	2-600		16-5/8	6-1/8	6-3/4
&	2-900	OR	16-5/8	6-1/8	6-3/4
	2-1500	3-300	16-5/8	6-1/8	6-3/4
2-2500	17-3/16		6-11/16	6-3/4	
3-150	16-5/8		6-1/8	6-3/4	

FOR R.T.J. DIMENSIONS, CONSULT FACTORY

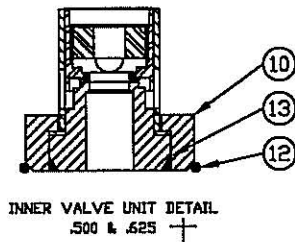
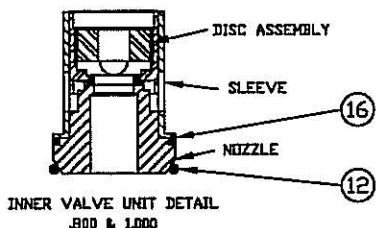
SEE PAGE 23 & 24 FOR CAPACITY CHART

SERIES NO. S	ORIFICE SIZE	SEAT MATERIAL	SET PRESSURE RANGE
* 1634	.500	PLASTIC ONLY	40 - #7,500/8,000
* 1635	.625	PLASTIC ONLY	40 - 6,000
* 1636	.800	PLASTIC ONLY	40 - 3,300
* 1637	1.000	PLASTIC ONLY	40 - 2,130

§ SEE PAGE 89 & 90 FOR PART NUMBERING SYSTEM.

SUGGESTED SEAT MATERIAL

SET PRESSURE	SEAT MATERIAL
40 - 3,000	TEFLON †
3,000 - 5,000	KEL-F †
5,000 - 6,000	VESPEL †



† TEMPERATURE RANGE
TEFLON : -450°F TO 500°F
KEL-F : -400°F TO 400°F
VESPEL : -420°F TO 500°F

‡ OTHER SPRING MATERIALS
AVAILABLE UPON REQUEST.

WEIGHT IS APPROX. 60#
DEPENDING ON FLANGE SIZE

‡ USE RETAINER RING FOR
THESE INNER VALVE UNITS
ONLY.

ITEM NO.	PART NAME	316 S/S MATERIAL CLASS	CARBON STEEL MATERIAL CLASS
1	HOOD	ASTM A479,TYPE 316	ASME SA29,TYPE 12L14
2	LOCKNUT	ASTM A479,TYPE 316	ASTM A582,TYPE 303
3	HOOD SEAL	TEFLON,BUNA-N,VITON	TEFLON,BUNA-N,VITON
4	PRESSURE SCREW	ASTM A479,TYPE 316	ASTM A582,TYPE 303
5	SPRING PLATES	ASTM A479,TYPE 316	ASTM A582,TYPE 303
6	SPRING	ASTM A313,TYPE 17/7	ASTM A313,TYPE 17/7
7	SPRING POST	ASTM A479,TYPE 316	ASTM A582,TYPE 303
8	SEAL & WIRE	LEAD SEAL/S/S WIRE	LEAD SEAL/S/S WIRE
9	INNER VALVE UNIT	303 S/S ; 316 S/S	303 S/S ; 316 S/S
10	RETAINER RING	ASTM A479,TYPE 316	ASTM A582,TYPE 303
11	BONNET	ASME A351,TYPE CF8M	ASME SA216,TYPE WCB
12	BODY SEAL	TEFLON,BUNA-N,VITON	TEFLON,BUNA-N,VITON
13	RETAINER SEAL	TEFLON,BUNA-N,VITON	TEFLON,BUNA-N,VITON
14	BODY	ASME A351,TYPE CF8M	ASME SA216,TYPE WCB
15	BOLTS (3 REQUIRED)	ASTM A479,TYPE 316	B7
16	B.P. SEAL	TEFLON,BUNA-N,VITON	TEFLON,BUNA-N,VITON