

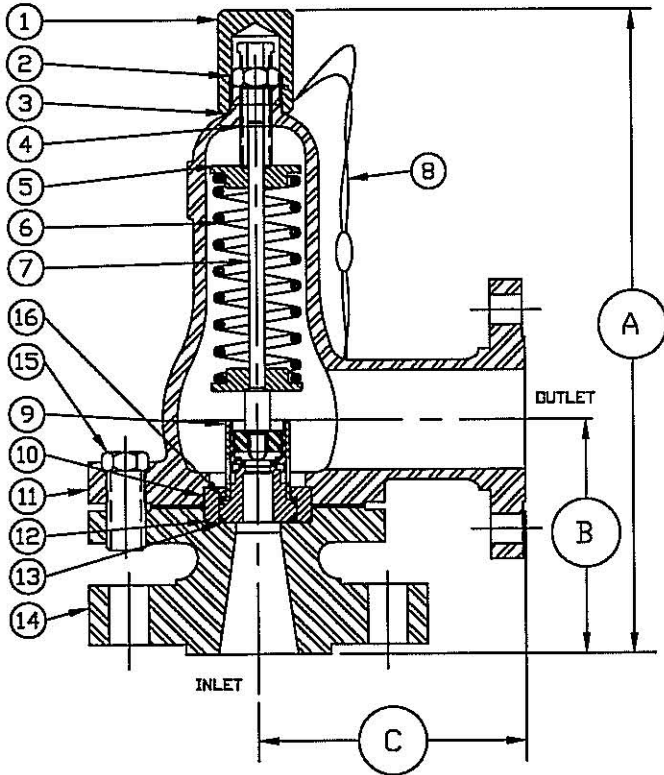


SAFETY-RELIEF VALVE

MODEL 1600

(SERIES 1634,1635,1636 & 1637)

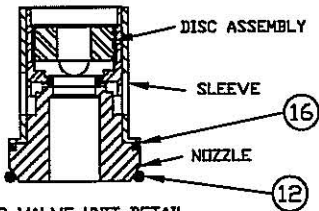
FOR AIR & GAS SERVICE
AT 10% OVERPRESSURE
METAL SEATS ONLY



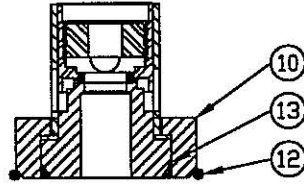
R.F. FLANGE DIMENSIONS

ORIFICE SIZE	INLET	OUTLET	A ±1/8	B ±1/8	C ±1/16
.500,	1½-150	2½-150,	16-5/8	6-1/8	6-3/4
	1½-300		16-5/8	6-1/8	6-3/4
	1½-600		16-5/8	6-1/8	6-3/4
.625,	1½-900	2½-300,	16-5/8	6-1/8	6-3/4
	1½-1500		16-5/8	6-1/8	6-3/4
.800,	2-150	3-150,	16-5/8	6-1/8	6-3/4
	2-300		16-5/8	6-1/8	6-3/4
& 1.000	2-600	OR 3-300	16-5/8	6-1/8	6-3/4
	2-900		16-5/8	6-1/8	6-3/4
	2-1500		16-5/8	6-1/8	6-3/4
	2-2500		17-3/16	6-11/16	6-3/4
	3-150		16-5/8	6-1/8	6-3/4

FOR R.T.J. DIMENSIONS, CONSULT FACTORY



INNER VALVE UNIT DETAIL
.800 & 1.000



INNER VALVE UNIT DETAIL
.500 & .625

SERIES NO. §	ORIFICE SIZE	SEAT MATERIAL	SET PRESSURE RANGE
1634	.500	METAL ONLY	40 - 1,000
1635	.625	METAL ONLY	40 - 1,000
1636	.800	METAL ONLY	40 - 1,000
1637	1.000	METAL ONLY	40 - 1,000

§ SEE PAGE 89 & 90 FOR PART NUMBERING SYSTEM.

† OTHER SPRING MATERIALS AVAILABLE UPON REQUEST.

WEIGHT IS APPROX. 60# DEPENDING ON FLANGE SIZE

† USE RETAINER RING FOR THESE INNER VALVE UNITS ONLY.

ITEM NO.	PART NAME	316 S/S MATERIAL CLASS	CARBON STEEL MATERIAL CLASS
1	HOOD	ASTM A479,TYPE 316	ASME SA29,TYPE 12L14
2	LOCKNUT	ASTM A479,TYPE 316	ASTM A582,TYPE 303
3	HOOD SEAL	TEFLON,BUNA-N,VITON	TEFLON,BUNA-N,VITON
4	PRESSURE SCREW	ASTM A479,TYPE 316	ASTM A582,TYPE 303
5	SPRING PLATES	ASTM A479,TYPE 316	ASTM A582,TYPE 303
6	SPRING	ASTM A313,TYPE 17/7	ASTM A313,TYPE 17/7
7	SPRING POST	ASTM A479,TYPE 316	ASTM A582,TYPE 303
8	SEAL & WIRE	LEAD SEAL/S/S WIRE	LEAD SEAL/S/S WIRE
9	INNER VALVE UNIT	303 S/S + 316 S/S	303 S/S + 316 S/S
10	RETAINER RING	ASTM A479,TYPE 316	ASTM A582,TYPE 303
11	BONNET	ASME A351,TYPE CF8M	ASME SA216,TYPE WCB
12	BODY SEAL	TEFLON,BUNA-N,VITON	TEFLON,BUNA-N,VITON
13	RETAINER SEAL	TEFLON,BUNA-N,VITON	TEFLON,BUNA-N,VITON
14	BODY	ASME A351,TYPE CF8M	ASME SA216,TYPE WCB
15	BOLTS (3 REQUIRED)	ASTM A479,TYPE 316	B7
16	B.P. SEAL	TEFLON,BUNA-N,VITON	TEFLON,BUNA-N,VITON