

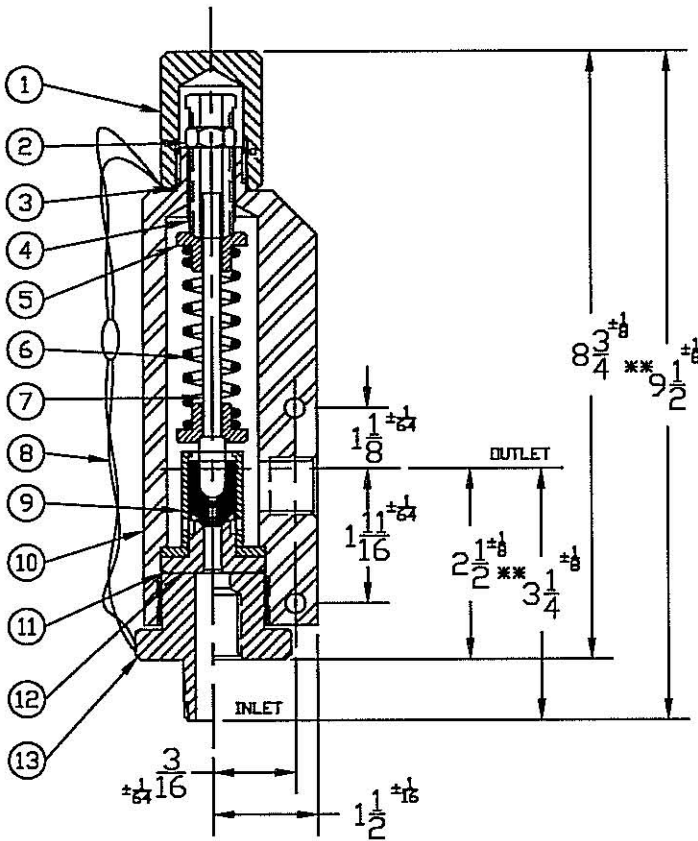
SAFETY-RELIEF VALVE

MODEL 1700

(SERIES 1713 & 1719)

**THESE DIMENSIONS ARE GOOD FOR
1" FNPT & MS33649-16 ALSO.

FOR LIQUID SERVICE
AT 10% OVERPRESSURE



THREAD CONNECTIONS

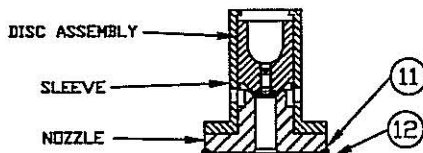
ORIFICE SIZE	INLET	OUTLET
.187	1/4,3/8,1/2,3/4,1" FNPT	1/2,3/4,1" FNPT
	1/4,3/8,1/2,3/4,1" MNPT	MS33649-4,6,8,12,16
	MS33649-4,6,8,10,12,16	
	MS33656-8,10,12,16	
	1/4,3/8,9/16,3/4,1" AUTOCLAVE	
.375	1/4,9/16 HP AMINCO GRAYLOC	GRAYLOC
	3/4,1" FNPT AUTOCLAVE	1" FNPT AUTOCLAVE
	3/4, 1" MNPT	MS33649-16
	MS33649-12,16	
	MS33656-12,16	

SEE PAGE 72 & 73 FOR CAPACITY CHART
§ SEE PAGE 89 & 90 FOR PART NUMBERING SYSTEM.

SERIES NO. §	ORIFICE SIZE	SEAT MATERIAL	SET PRESSURE RANGE
1719	.187	PLASTIC ONLY	40 - 15,000
1713	.375	PLASTIC ONLY	40 - 3,500

SUGGESTED SEAT MATERIAL

SET PRESSURE	SEAT MATERIAL
40 - 3,000	TEFLON †
3,000 - 3,500	KEL-F †



INNER VALVE UNIT
UP TO 9,999 PSIG

† TEMPERATURE RANGE
TEFLON : -450°F TO 500°F
KEL-F : -400°F TO 400°F

† OTHER SPRING MATERIALS
AVAILABLE UPON REQUEST.

***IVU FOR .375
C/S OR 316 S/S CLASS HAS
303 S/S SLEEVE
316 S/S NOZZLE

WEIGHT IS APPROX. 9#

ITEM NO.	PART NAME	316 S/S MATERIAL CLASS	CARBON STEEL MATERIAL CLASS
1	HOOD	ASTM A479,TYPE 316	ASME SA29,TYPE 12L14
2	LOCKNUT	ASTM A479,TYPE 316	ASTM A582,TYPE 303
3	HOOD SEAL	TEFLON,BUNA-N,VITON	TEFLON,BUNA-N,VITON
4	PRESSURE SCREW	ASTM A479,TYPE 316	ASTM A582,TYPE 303
5	SPRING PLATES	ASTM A479,TYPE 316	ASTM A582,TYPE 303
6	SPRING	ASTM A313,TYPE 17/7	ASTM A313,TYPE 17/7
7	SPRING POST	ASTM A479,TYPE 316	ASTM A582,TYPE 303
8	SEAL & WIRE	LEAD SEAL,S/S WIRE	LEAD SEAL,S/S WIRE
9	INNER VALVE UNIT***	ASTM A479,TYPE 316	ASTM A479,TYPE 316
10	BONNET	ASTM A479,TYPE 316	ASME SA29,TYPE 1018
11	BODY SEAL	TEFLON,BUNA-N,VITON	TEFLON,BUNA-N,VITON
12	GASKET	TEFLON	TEFLON
13	BODY	ASTM A479,TYPE 316	ASME SA29,TYPE 1018