



# SAFETY-RELIEF VALVE

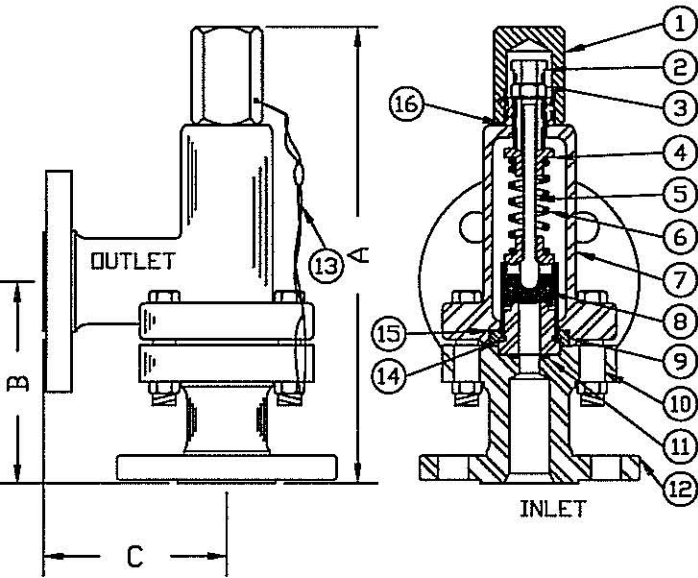
## MODEL 4800

(SERIES 484 & 486)

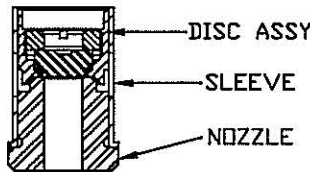
FOR AIR AND GAS SERVICE  
AT 10% OVERPRESSURE

SEE PAGE 60 FOR LIFTING DEVICES

### R.F. FLANGE DIMENSIONS



| ORIFICE SIZE   | INLET & OUTLET    | A ±1/8 | B ±1/8 | C ±1/16 |
|----------------|-------------------|--------|--------|---------|
| .375           | 1/2-150 x 3/4-300 | 9      | 4-3/8  | 3-11/16 |
|                | 3/4-150 x 1-150   | 9      | 4-3/8  | 3-11/16 |
|                | 3/4-300 x 1-150   | 9      | 4-3/8  | 3-11/16 |
|                | 3/4-600 x 1-150   | 9      | 4-3/8  | 3-11/16 |
|                | 3/4-900 x 1-300   | 9      | 4-3/8  | 3-11/16 |
|                | 1-150 x 1½-150    | 9-9/16 | 4-7/16 | 4-3/16  |
|                | 1-300 x 1½-150    | 9-9/16 | 4-7/16 | 4-3/16  |
|                | 1-600 x 1½-300    | 9-9/16 | 4-7/16 | 4-3/16  |
| .500           | 1-900 x 1½-300    | 9-9/16 | 4-7/16 | 4-3/16  |
|                | 1-150 x 1½-150    | 9-9/16 | 4-7/16 | 4-3/16  |
|                | 1-300 x 1½-150    | 9-9/16 | 4-7/16 | 4-3/16  |
|                | 1-600 x 1½-300    | 9-9/16 | 4-7/16 | 4-3/16  |
|                | 1-900 x 1½-300    | 9-9/16 | 4-7/16 | 4-3/16  |
|                | 1½-150 x 2-150    | 9-9/16 | 4-7/16 | 4-3/16  |
|                | 1½-300 x 2-150    | 9-9/16 | 4-7/16 | 4-3/16  |
|                | 1½-600 x 2-300    | 9-9/16 | 4-7/16 | 4-3/16  |
| 1½-900 x 2-300 | 9-9/16            | 4-7/16 | 4-3/16 |         |



INNER VALVE UNIT DETAIL  
PLASTIC SEAT

| SERIES NO. § | ORIFICE SIZE | SEAT MATERIAL | SET PRESSURE RANGE |
|--------------|--------------|---------------|--------------------|
| 484          | .375         | PLASTIC ONLY  | 50 - 5,000         |
| 486          | .500         | PLASTIC ONLY  | 50 - 2,000         |

### SUGGESTED SEAT MATERIAL

| SET PRESSURE  | SEAT MATERIAL |
|---------------|---------------|
| 50 - 3,000    | TEFLON ¶      |
| 3,000 - 5,000 | KEL-F ¶       |
| 3,000 - 5,000 | VESPEL ¶      |

| ITEM NO. | PART NAME          | 316 S/S MATERIAL CLASS | CARBON STEEL MATERIAL CLASS |
|----------|--------------------|------------------------|-----------------------------|
| 1        | HOOD               | ASTM A479,TYPE 316     | ASME SA29,TYPE 12L14        |
| 2        | PRESSURE SCREW     | ASTM A479,TYPE 316     | ASTM A582,TYPE 303          |
| 3        | LOCKNUT            | ASTM A479,TYPE 316     | ASTM A582,TYPE 303          |
| 4        | SPRING PLATES (2)  | ASTM A479,TYPE 316     | ASTM A582,TYPE 303          |
| 5        | SPRING POST        | ASTM A479,TYPE 316     | ASTM A582,TYPE 303          |
| 6        | SPRING             | ASTM A313,TYPE 316     | ASTM A313,TYPE 316          |
| 7        | BONNET             | ASME A351,TYPE CF8M    | ASME SA216,TYPE WCB         |
| 8        | INNER VALVE UNIT   | ASTM A479,TYPE 316     | ASTM A582,TYPE 303          |
| 9        | RETAINER RING      | ASTM A479,TYPE 316     | ASTM A582,TYPE 303          |
| 10       | BOLTS (4)          | ASTM A479,TYPE 316     | ASME SA29,TYPE 12L14        |
| 11       | NOZZLE SEAL        | TEFLON,BUNA-N,VITON    | TEFLON,BUNA-N,VITON         |
| 12       | BODY               | ASME A351,TYPE CF8M    | ASME SA216,TYPE WCB         |
| 13       | SEAL & WIRE        | LEAD SEAL/S/S WIRE     | LEAD SEAL/COPPER WIRE       |
| 14**     | BACK PRESSURE SEAL | TEFLON OR METAL        | TEFLON OR METAL             |
| 15**     | RETAINER SEAL      | TEFLON OR METAL        | TEFLON OR METAL             |
| 16       | HOOD SEAL          | TEFLON,BUNA-N,VITON    | TEFLON,BUNA-N,VITON         |

¶ TEMPERATURE RANGE  
TEFLON : -450°F TO 500°F  
KEL-F : -400°F TO 400°F  
VESPEL : -420°F TO 500°F

† OTHER SPRING MATERIALS AVAILABLE UPON REQUEST.

WEIGHT IS APPROX. 15#

\*\*AVAILABLE UPON REQUEST.

§ SEE PAGE 91 & 92 FOR PART NUMBERING SYSTEM.

SEE PAGE 55 & 56 FOR CAPACITY CHARTS.