

# INLINE CHECK VALVE

## MODEL 5400

DASH NUMBER	MS SIZE*	NPT SIZE	DIMENSIONS			MINIMUM ORIFICE SIZE	APPROX. WEIGHT
			A ±1/16	B ±1/16	C ±1/16		
-04	1/4	1/8	3-1/4	1-1/8	3-3/4	.172	1#
-05	5/16	1/4	3-1/4	1-1/8	3-3/4	.234	1#
-06	3/8	3/8	3-1/4	1-1/8	3-3/4	.297	1#
-08	1/2	1/2	3-3/8	1-1/4	3-7/8	.391	1#
-12	3/4	3/4	4-1/2	1-3/4	5-1/8	.609	2#
-16	1"	1"	5-3/8	2"	6"	.844	3#

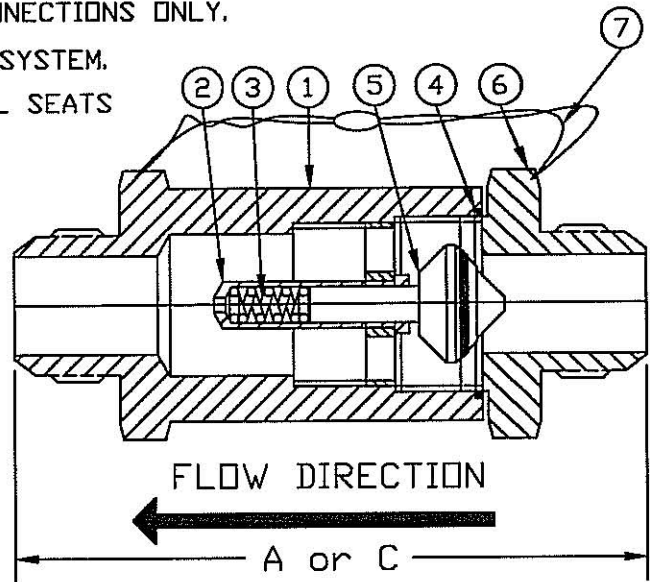
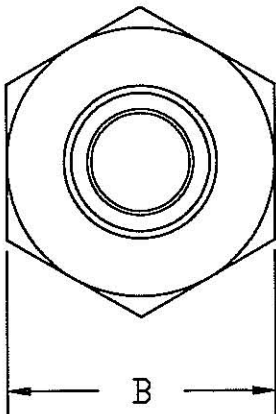
\*ALL AREAS EQUAL TO OR GREATER THAN MS33649 TUBING OF SAME SIZE

§ DIMENSIONS ARE FOR MS CONNECTIONS ONLY.

¶ DIMENSIONS ARE FOR FNPT or MNPT CONNECTIONS ONLY.

SEE PAGE 93 & 94 FOR PART NUMBERING SYSTEM.

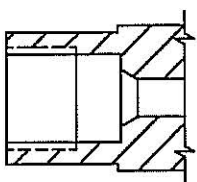
§ WITH TEFLON, KEL-F, VESPEL OR METAL SEATS



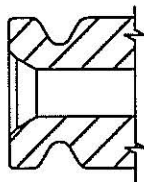
A = MS CONNECTIONS & C = PIPE THREAD CONNECTIONS

ITEM NUMBER	PART NAME	MATERIAL CLASS
1	BODY	ASTM A479,TYPE 316
2	CAGE	ASTM A479,TYPE 316
3	SPRING	ASTM A479,TYPE 316
4	SEAL	TEFLON
5	DISC ASSEMBLY	§ ASTM A479,TYPE 316
6	BASE	ASTM A479,TYPE 316
7	SEAL & WIRE	ASTM A479,TYPE 316

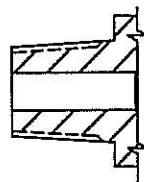
### ALTERNATE END CONNECTIONS



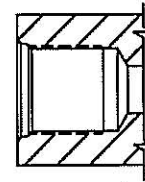
AMINCO



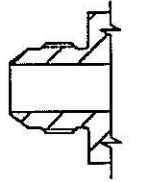
GRAYLOC



MALE NPT



MS33649



MS33656