

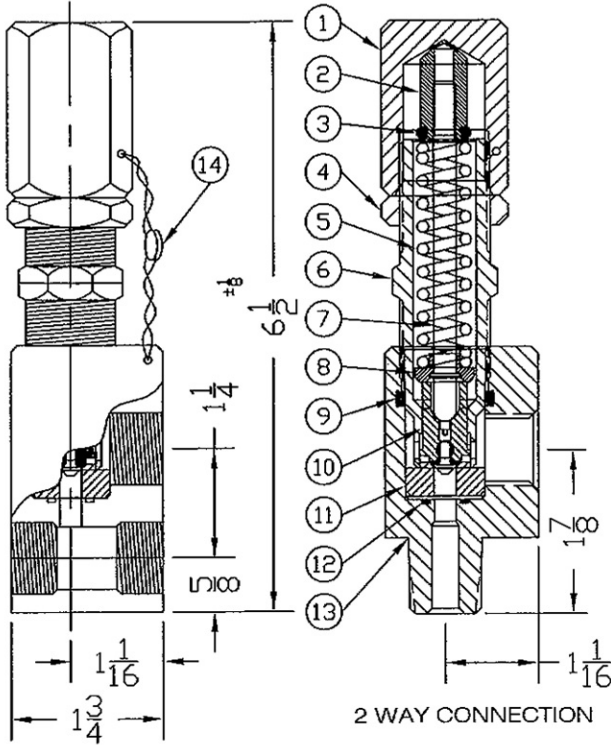


# SAFETY-RELIEF VALVE MODEL 3900

(SERIES 391 & 392)  
LIQUID SERVICE

\*ASME (140°F MAX.)  
UV CODED  
NATIONAL BOARDED

\*ASME UV CODED PER SEC. VIII DIV. I  
.250 DRIFICE 1/2 X 1/2 CONNECTIONS ONLY



### THREAD CONNECTIONS

ORIFICE SIZE	INLET	OUTLET
.187	1/4,3/8,1/2,3/4 MNPT	1/4,3/8,1/2 FNPT
	1/4,3/8,1/2 FNPT	MS33649-4,6,8
	MS33649-4,6,8	3/8 SOCKET WELD
	MS33656-6,8	
	1/4 AUTOCLAVE DR AMINCO	
.250	1/4,3/8,1/2,3/4 MNPT	1/4,3/8,1/2 FNPT
	1/4,3/8,1/2 FNPT	MS33649-4,6,8
	3/8,1/2 SOCKET WELD	3/8 SOCKET WELD
	MS33649-4,6,8	
	MS33656-6,8	
	9/16 AUTOCLAVE	

SERIES NO. §	ORIFICE SIZE	SEAT MATERIAL	MAX. SET PRESSURE
391**	.187	PLASTIC/METAL	6,750
392*	.250	PLASTIC ONLY	*2,000 / 6,000

\*\* .187 DRIFICE AT 25% OVERPRESSURE  
\* .250 DRIFICE AT 10% OVERPRESSURE

### SUGGESTED SEAT MATERIAL

SET PRESSURE	SEAT MATERIAL
50 - 3,000	TEFLON †
3,000 - 5,000	KEL-F †
5,000 - 6,750	VESPEL †

ITEM NO.	PART NAME	316 S/S MATERIAL CLASS	CARBON STEEL MATERIAL CLASS
1	HOOD	ASTM A479,TYPE 316	ASME SA29,TYPE 12L14
2	SPRING PLUNGER	ASTM A479,TYPE 316	ASTM A582,TYPE 303
3	SPRING PLUNGER SEAL	TEFLON,BUNA-N,VITON	TEFLON,BUNA-N,VITON
4	LOCKNUT	ASTM A479,TYPE 316	ASTM A582,TYPE 303
5	SPRING	ASTM A313,TYPE 316	ASTM A313,TYPE 316
6	BONNET	ASTM A479,TYPE 316	ASTM A582,TYPE 303
7	SPRING PDST	ASTM A479,TYPE 316	ASTM A582,TYPE 303
8	SPRING PLATE	ASTM A479,TYPE 316	ASTM A582,TYPE 303
9	BODY SEAL	TEFLON,BUNA-N,VITON	TEFLON,BUNA-N,VITON
10	DISC ASSEMBLY	ASTM A479,TYPE 316	ASTM A582,TYPE 303
11	NOZZLE	ASTM A479,TYPE 316	ASTM A582,TYPE 303
12	NOZZLE SEAL	TEFLON,BUNA-N,VITON	TEFLON,BUNA-N,VITON
13	BODY	ASTM A479,TYPE 316	ASME SA29,TYPE 12L14
14	SEAL & WIRE	LEAD SEAL:S/S WIRE	LEAD SEAL:S/S WIRE